

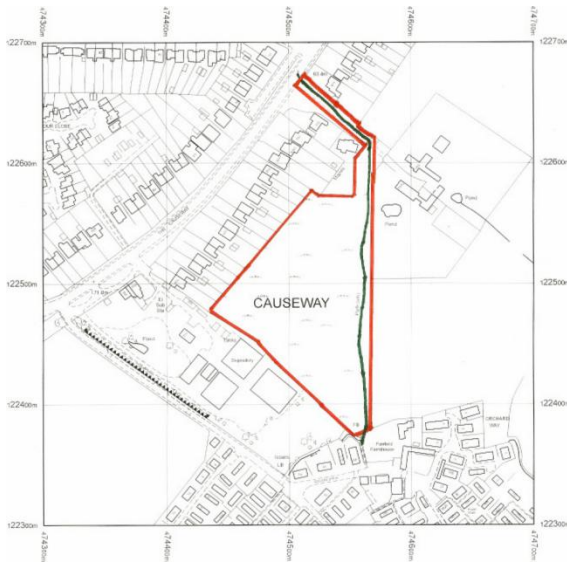


Causeway Farm Group, Petersfield

www.causewayfarm.com

June 2010

Earlier this year we submitted an application for part of Causeway Farm, shown on the map below edged in red, to become common land, or a town green, which means that it could never be built on. We have submitted initial evidence that the land has been freely accessible, without let or hindrance, for at least the last 20 years.



The application has now been deemed duly made by Hampshire County Council and we would now like to obtain more evidence questionnaires which demonstrate recreational use of the land over the past years, although not necessarily the whole period.

This could be walking, dog walking, children playing, blackberry picking, wildlife and fauna spotting and many more activities, and it would be very useful if you could flag up if you have a rear gate backing on to the land.

As a neighbour this would clearly benefit you greatly, and we would urge you to complete the questionnaire, which you can download from our website at www.causewayfarm.com/green.asp

Once you have completed the form please return it to me and we will submit it. If you are not able to print off the form and would like a copy please call me on 01730 233443, or email at the address below.

As you probably know there will be an application to develop this land, and more, to EHDC over the next few months so this is our last chance to be able to ensure that this land is never developed.

Our website – www.causewayfarm.com - also enables you to sign up for our Twitter and Facebook groups, which will have much more information on how and when to object to the development.

Finally, if you know of anyone else who has used this land over the last 20 years, and would be happy to complete an evidence questionnaire, please pass this letter on or let me know.

Kind regards

Philip Haines
nodevelopment@causewayfarm.com
108a The Causeway